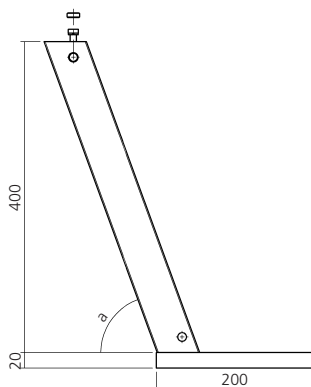


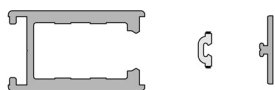
Darstellung
Image 35%

Stützen und Zubehör siehe System 260
Zwischenträger und Zubehör siehe System 270
Kipplagersysteme siehe System 220-235
Beleuchtung und Zubehör siehe System 460, 470

Supports and accessories find at system 260
Intermediate brackets and accessories find at system 270
Tilting armatures and accessories find at system 220-235
Lightings and accessories find at system 460, 470

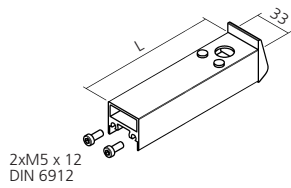


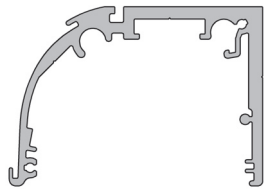
| | | |
|---------|------------------------------|--------------|
| Stütze | 70° | 21330 |
| Support | 60° | 21331 |
| | nach Angabe on indication | 21332 |

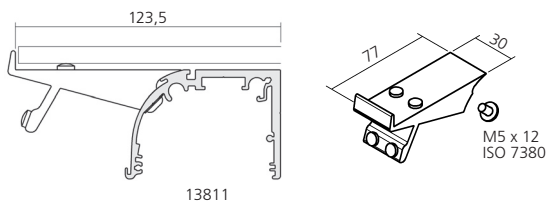


Kippbeschlag
 Tilting armature

245


 Oberer Träger, Aluminium
 Upper bracket

 L **24010**
 nach Angabe
 on indication

 Beleuchtungsblende, Aluminium
 Light shield

 6000 mm **13811**

 Vorsatzträger, Aluminium
 für oberen Träger
 Preset bracket
 for upper bracket

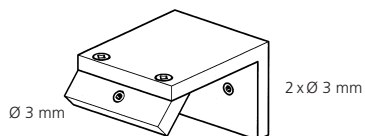
23875

 Anschlagprofil, Hart-PVC
 Stop Profile, Hard PVC

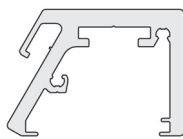
 6000 mm **23874**

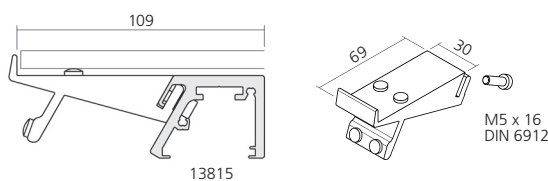
 Farbe: transp. und schwarz
 Colour: transp. and black

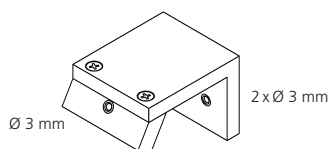
 Abdeckprofil, Weich-PVC
 Covering Profile, Soft PVC

22418

 passend für Beleuchtungsblende 13811
 compatible for light shield 13811

 Bohrschablone, Aluminium
 Drilling jig

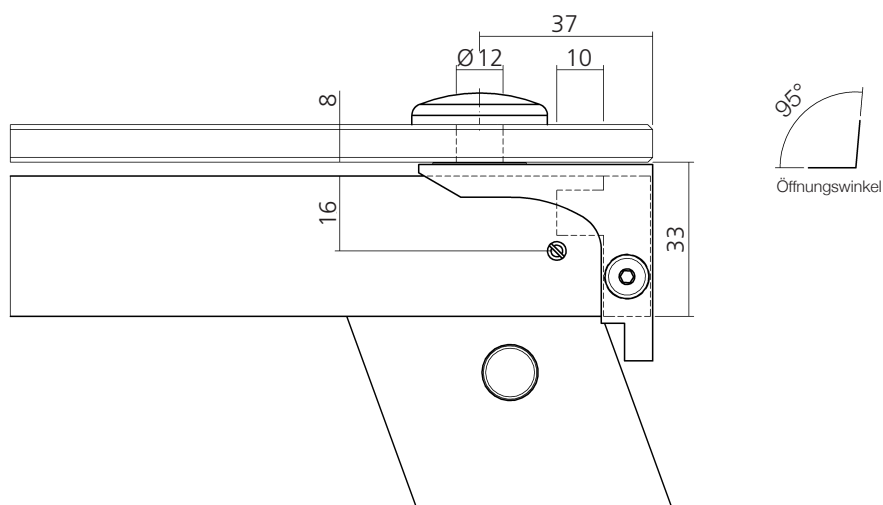
23877

 Beleuchtungsblende, Aluminium
 Light shield

 6000 mm **13815**

 Vorsatzträger, Aluminium
 für oberen Träger
 Preset bracket
 for upper bracket

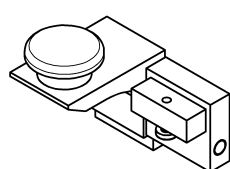
23950

 passend für Beleuchtungsblende 13815
 compatible for light shield 13815

 Bohrschablone, Aluminium
 Drilling jig

23492

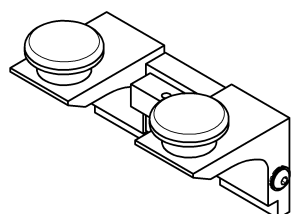
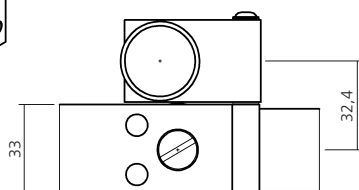


Darstellung
Image 60%



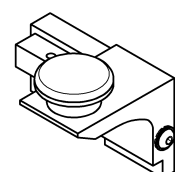
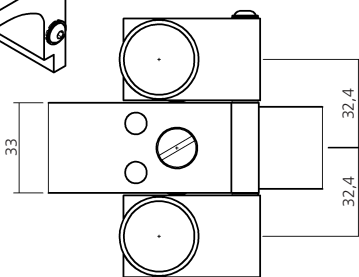
Schwenklager rechts, Aluminium
Pivot bearing right

22986



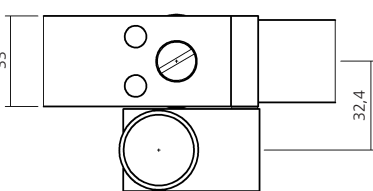
Schwenklager mitte, Aluminium
Pivot bearing center

22987



Schwenklager links, Aluminium
Pivot bearing left

22985



WAS

Warsteiner
Alu Systeme
