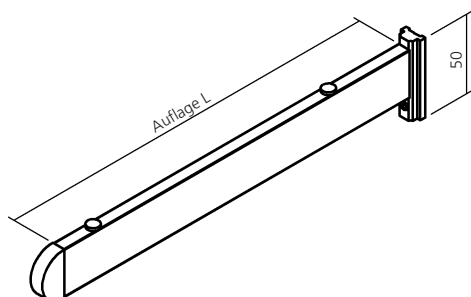
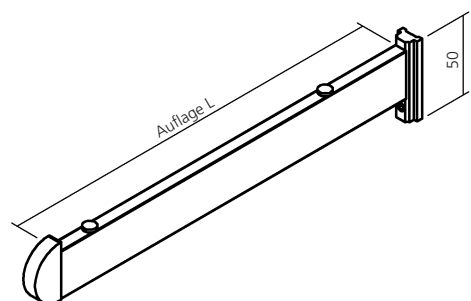


Stellschienensystem
Mounting rail system

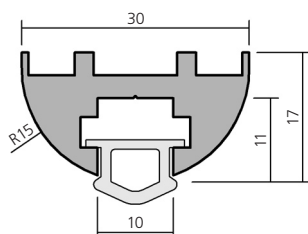
625



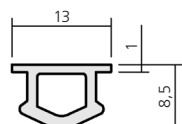
Glasbodenträger, Aluminium	150 mm	51415
Endkappe bündig	200 mm	51416
Bracket für glass shelf	250 mm	51417
end cap flush	300 mm	51418
	nach Angabe to indication	51419



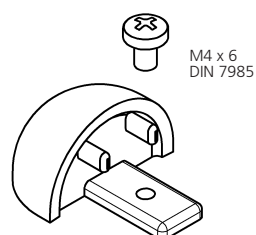
Glasbodenträger, Aluminium	150 mm	51453
Endkappe überstehend	200 mm	51454
für 8 mm Glas	250 mm	51455
Bracket für glass shelf	300 mm	51456
end cap overlying	nach Angabe to indication	51457
for 8 mm glass		



Stellschiene, Aluminium	6000 mm	16818
alle 300 mm gebohrt		
Mounting rail		
drilled every 300 mm		



Abdeckprofil, Weich-PVC	22421
Covering profile	



Endkappe, Druckguß	51426
End cap, die cast	

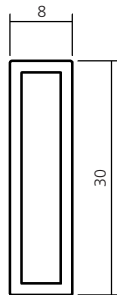
Stellschienen-system
Mounting rail system

625

Rechteckrohr, Aluminium
Rectangular tube

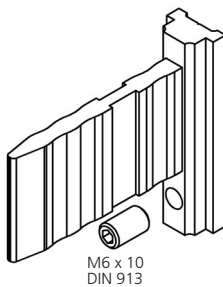
6000 mm

17035



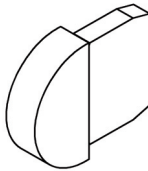
Trägerbefestigung, Aluminium
Bracket fastening

51440



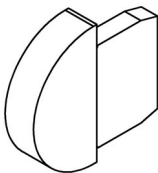
Endkappe bündig, Aluminium
End cap flush

51442



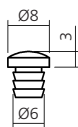
Endkappe überstehend, Aluminium
End cap overlying

51441



Glasbodenauflage, Kunststoff
Support of glass, plastic

51249



Abrisstüthenhalter, Aluminium
Support for tear-off bags

51424

